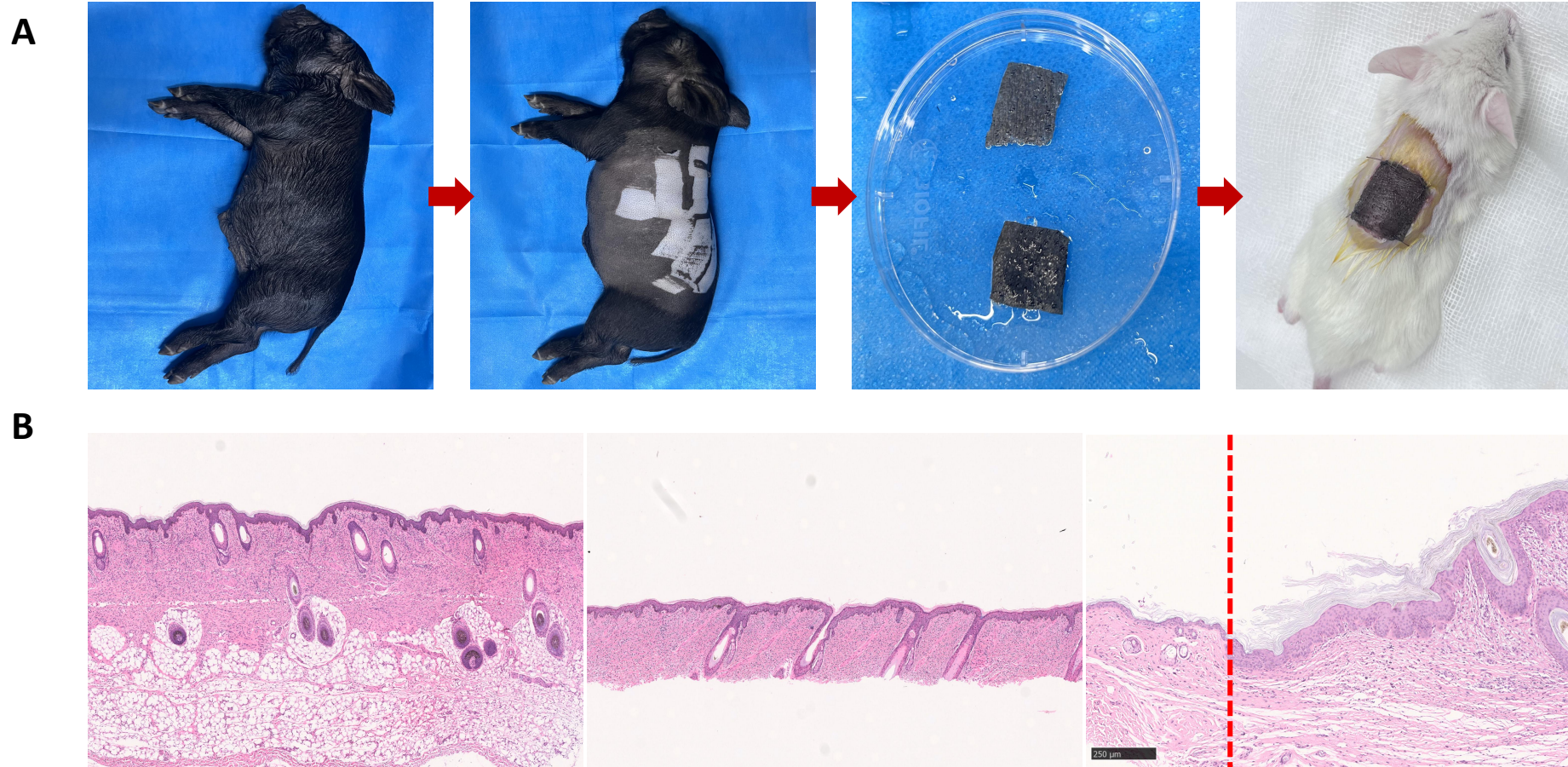


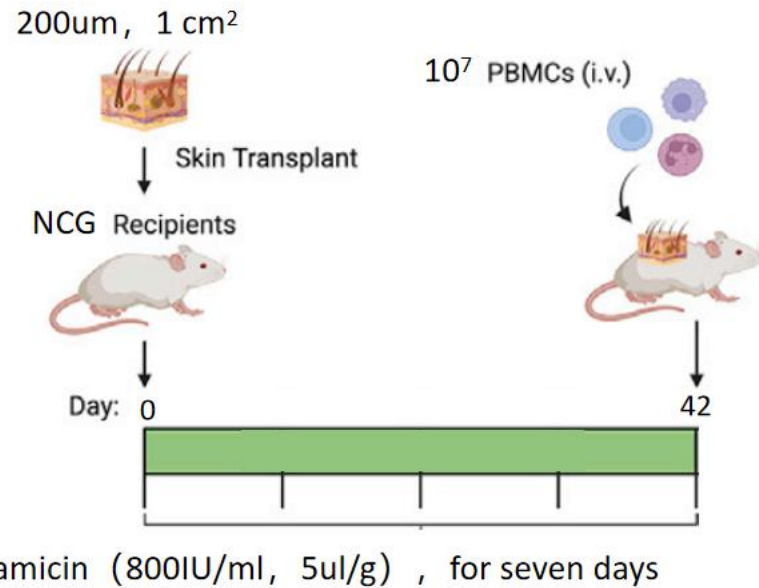
1. Construction of Xenograft Skin Transplantation Model



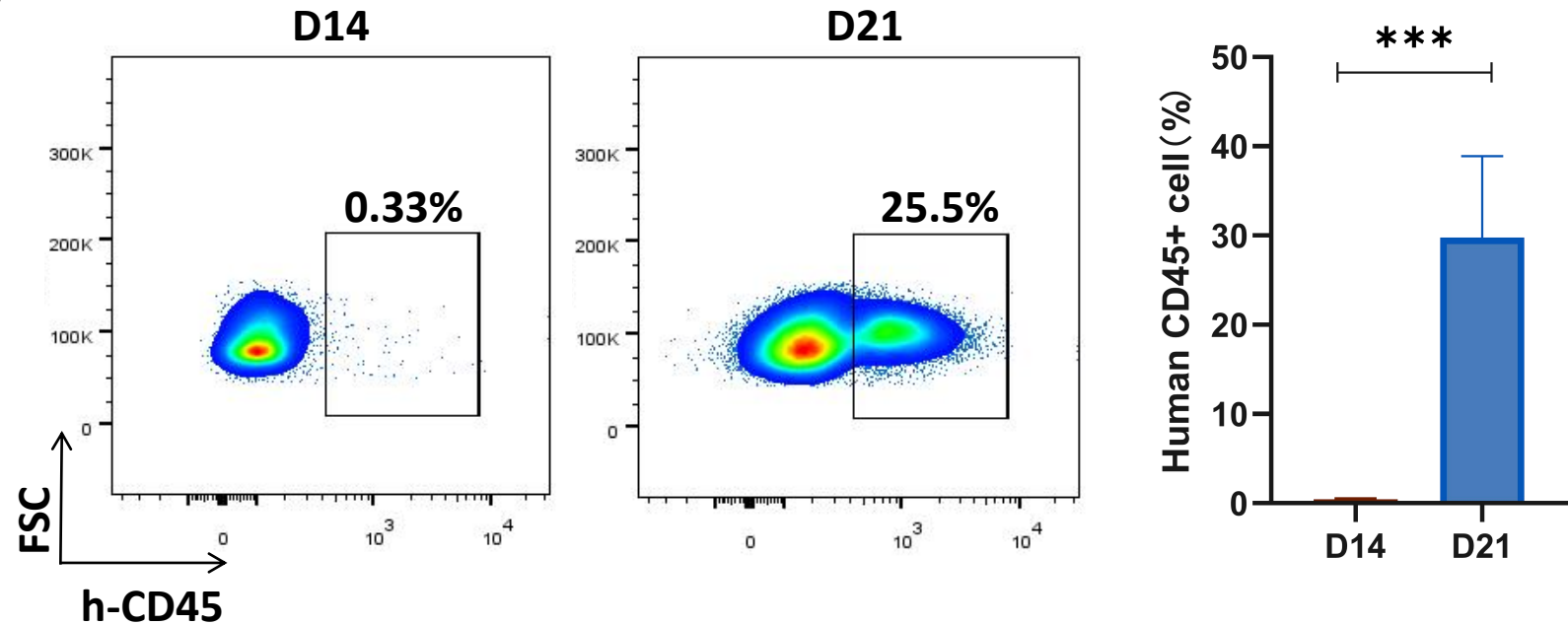
A. Process diagram for constructing xenograft model; B. HE staining images of graft before, during, and after transplantation

2. Humanization of heterologous skin transplantation model

A

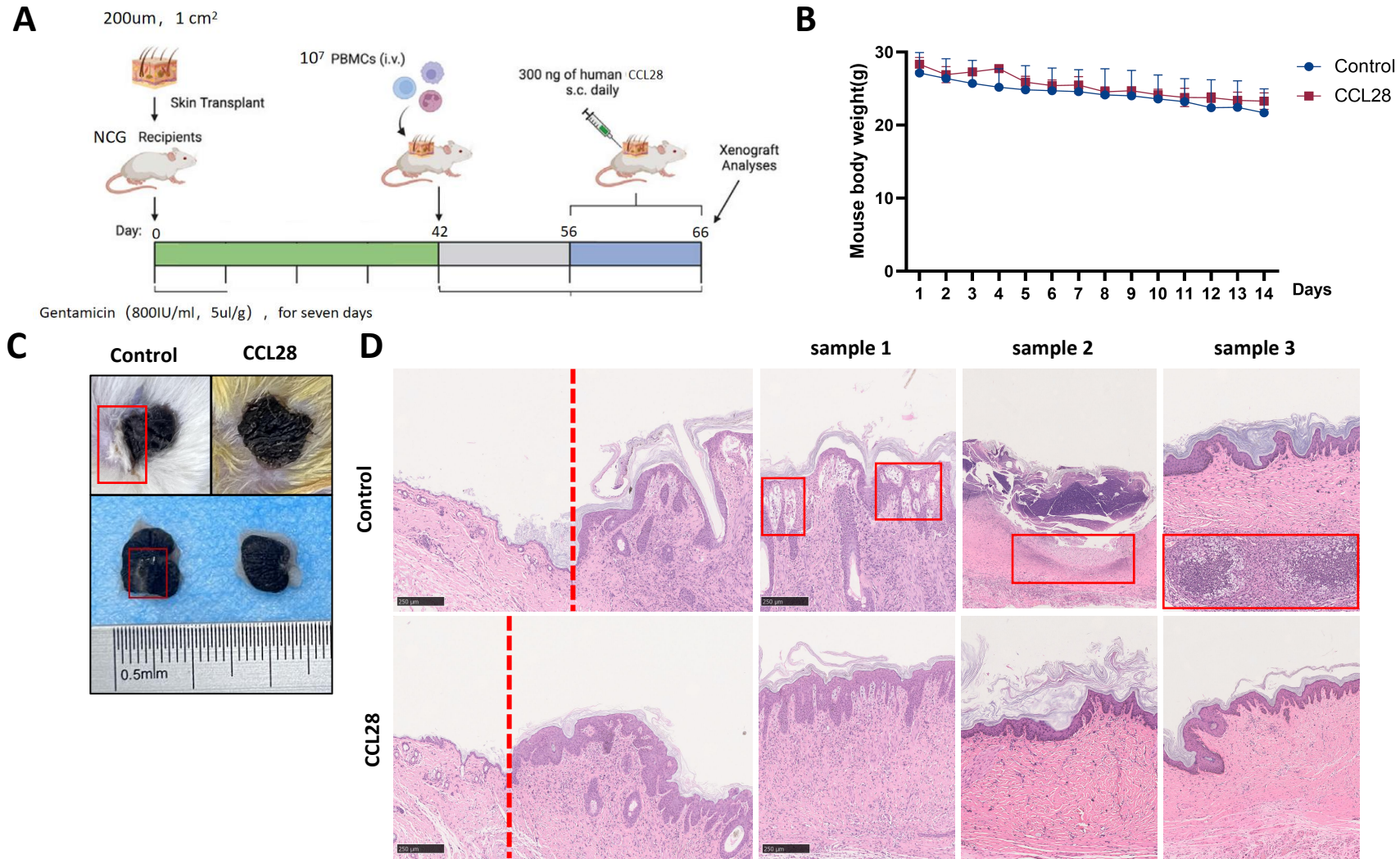


B



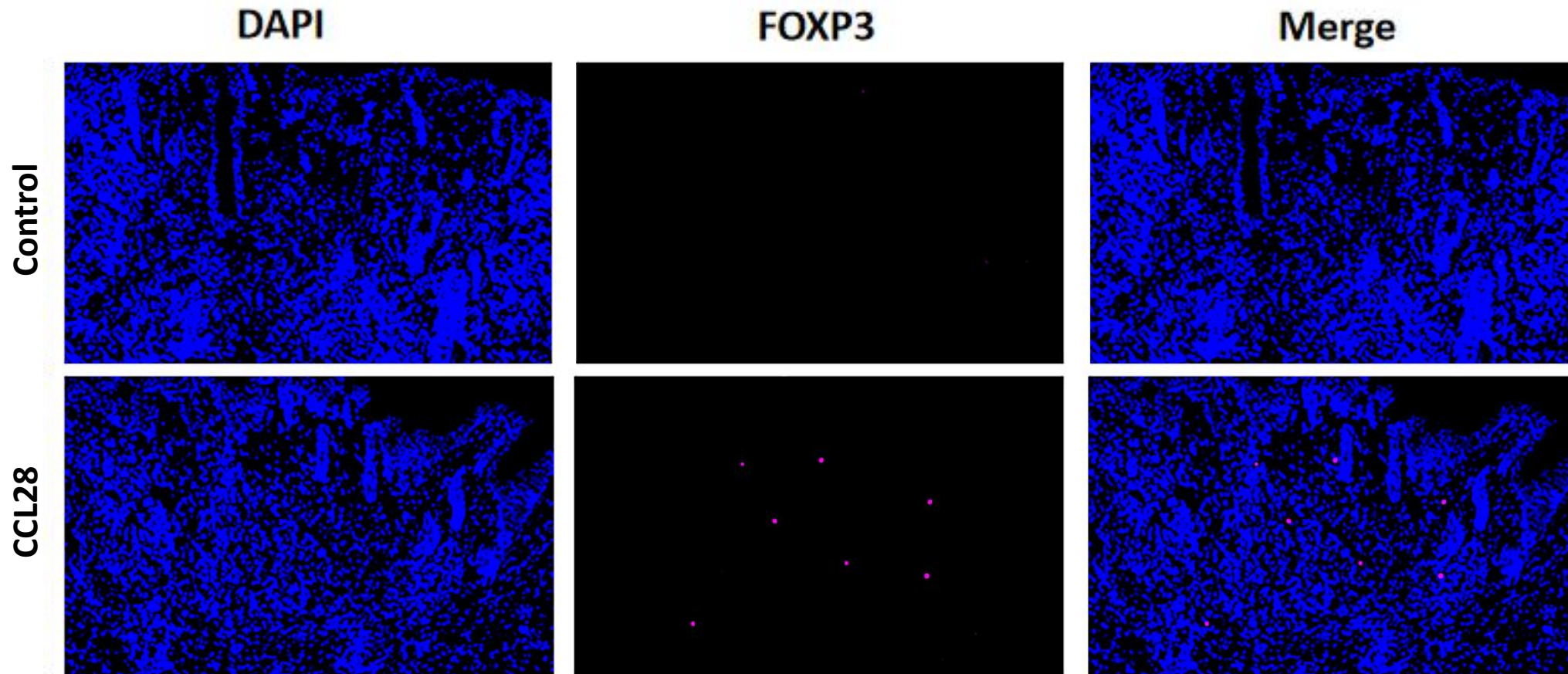
A. Humanization process diagram of heterologous skin transplantation model; B. Flow cytometry and statistical analysis of human CD45+ detection on D14 and D21 days in humanized mice undergoing xenogeneic skin transplantation

3. CCL28 has a protective effect on xenografts in a xenograft skin transplantation model



A. Humanization and drug injection flowchart of xenograft skin transplantation model; B. after treatment with PBS or chemokine CCL28, the body weight of mice was measured at designated time points. C. graft representative image and D. graft HE staining image

4. CCL28 has a recruiting effect on Treg cells in a xenograft skin transplantation model



Immunofluorescence staining of DAPI and FOXP3 in xenograft models treated with PBS or chemokine CCL28