

# The indication of liver transplantation for hepatocellular carcinoma in post-direct acting antivirals era in Japan

Goto R<sup>1</sup>, Shimamura T<sup>2</sup>, Nakajima T<sup>3</sup>, Ogawa K<sup>4</sup>, Tanaka K<sup>5</sup>, Shimizu T<sup>5</sup>, Minami R<sup>5</sup>  
Matsui T<sup>5</sup> Akutsu N<sup>6</sup>, Sasaki S<sup>6</sup>, Kanazawa R<sup>1</sup>, Kawamura N<sup>1</sup>, Watanabe M<sup>7</sup>  
Aiyama T<sup>1</sup>, Nagatsu A<sup>7</sup> Kakisaka T<sup>1</sup>, Taketomi A<sup>1</sup>

No financial conflicts of interest to disclose

Hokkaido University <sup>1</sup> Dept. of Gastroenterological Surgery I  
<sup>2</sup> Division of Organ Transplantation  
<sup>4</sup> Dept. of Gastroenterology and Hepatology  
<sup>7</sup> Dept. of Transplant surgery



Sapporo  
Japan

<sup>3</sup> Sapporo Kosei General Hospital Dept. of Hepatology 

<sup>5</sup> Teine Keijinkai Hospital Center for Gastroenterology 

<sup>6</sup> Sapporo Medical University Dept. of Gastroenterology and Hepatology 

# Background

Recent developments in the treatment of

- **Hepatocellular carcinoma (HCC)**
- **Hepatitis C virus** May change the indication of liver transplantation (LT)

Japanese national rule of **Deceased Donor LT (DDLT)** for **HCC**

- **Child-Pugh B or C**
- **HCC** within **Milan** or **5-5-500**
  - Tumor size  $5\text{ cm} \geq$
  - Number  $5 \geq$
  - AFP  $500 \geq$  Shimamura T, Transpl Int 2019

Double criteria as **Japan criteria** Implemented as of Aug. 2019 for DDLT

- **MELD exception**

Calculated MELD at wait-list registration

**+ Exception point - 2 points every 3 month** adopted since May 2019

## Aim

To evaluate the Japanese national rule for HCC in LT

## Patients

**N=294** Patients with detected primary HCC Jan. 2013 - Dec. 2017  
Multicenter study in Sapporo, Japan



N=5 insufficient data

**N=289**

## Patient's demographics at HCC detection.

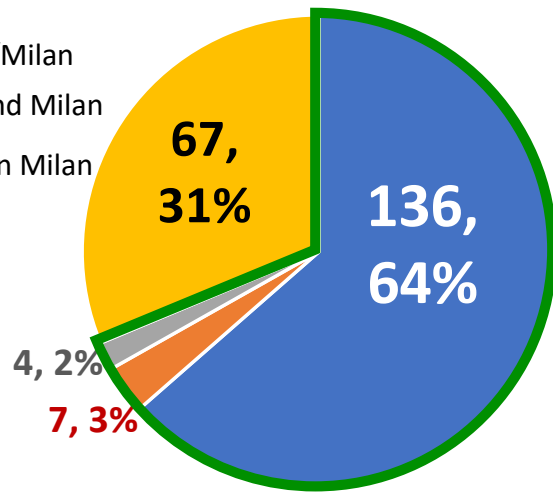
					Patients n=289			
Age					59.7 (23.8-65.9)			
Male					248 (85.8%)			
Primary liver disease	HBV	HCV	EtOH	MASH	102 (35.3%)	90 (31.1%)	56 (19.4%)	19 (6.6%)
	Cryptogenic	PBC	AIH		15 (5.2%)	4 (1.4%)	3 (1.0%)	
Child-Pugh	A	B	C		214 (74.0%)	52 (18.0%)	23 (8.0%)	
MELD					8.0 ± 3.5			
Platelet (x10 <sup>4</sup> /ml)	Albumin (mg/dl)	T-bil (mg/dl)			14.0 ± 6.9	3.7 ± 0.7	1.3 ± 1.8	
AST (IU/L)	ALT (IU/L)				47 (9-323)	37 (9-275)		
PT %	sCre (mg/dl)				82.3 ± 18.0	0.82 ± 0.71		
NLR					2.7 ± 2.5			
Fib4 index					3.44 (0.65-33.54)			
HCC	Diameter (mm), maximum				26.5 (5-210)			
	Number	1	2-3	4-5	184 (63.7%)	51 (17.3%)	14 (4.8%)	
		6-10	>11		4 (1.4%)	37 (12.8%)		
Vascular invasion		Distant metastasis			56 (19.4%)		21 (7.3%)	
AFP (ng/ml) /		DCP (mAU/ml)			13.2 (0.5-1,479,260)		59.0 (3.2-515,000)	
Criteria	Milan /	Within	Beyond		179 (61.9%)	110 (38.1%)		
	5-5-500	Within	Beyond		185 (63.0%)	104 (36.0%)		

mean ± SD or median (range) n (%)

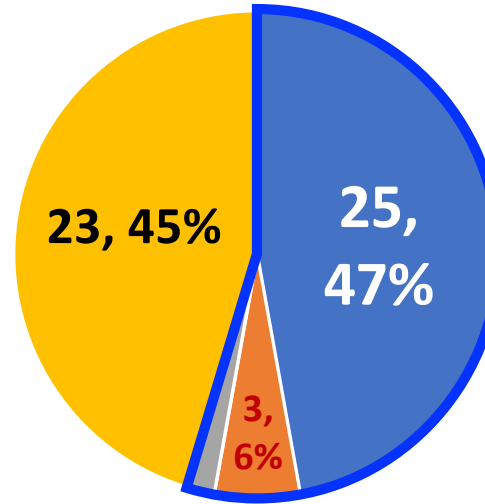
# HCC status and survival of HCC within Japan criteria in each Child Pugh classification

- Within both 5-5-500/Milan
- Within 5-5-500 beyond Milan
- Beyond 5-5-500 within Milan
- Beyond both criteria

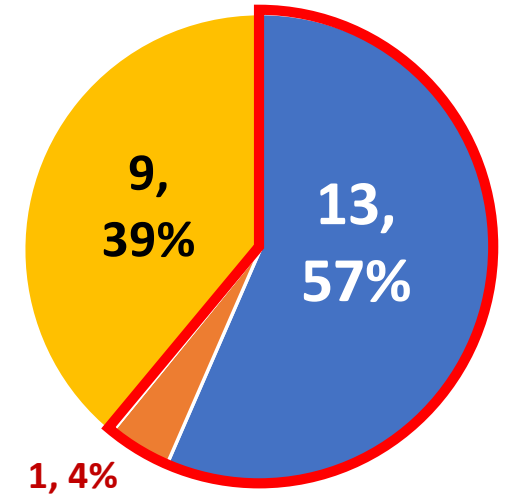
Child-Pugh **A** N=214



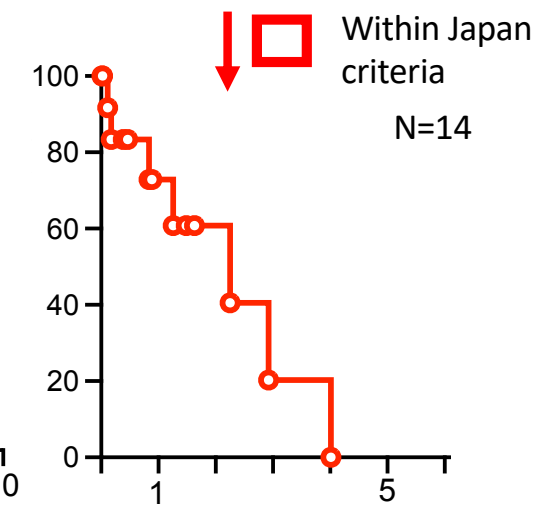
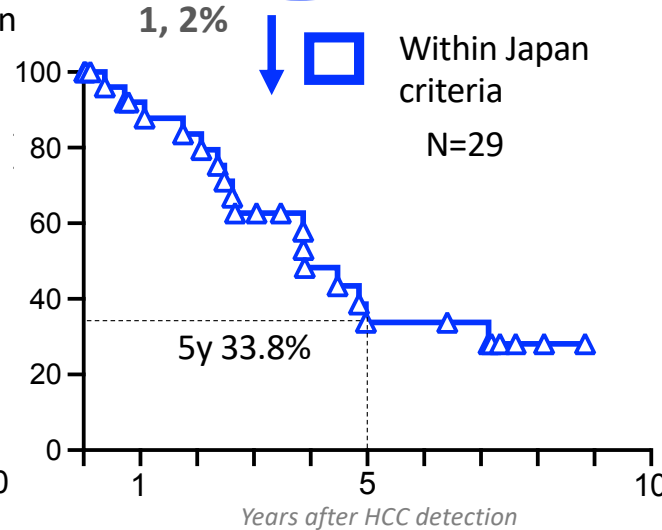
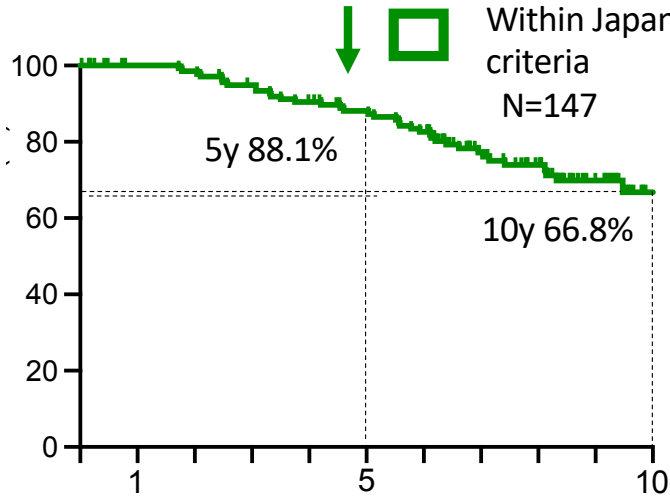
Child-Pugh **B** N=52



Child-Pugh **C** N=23



Patient's survival (%) within Japan criteria\*



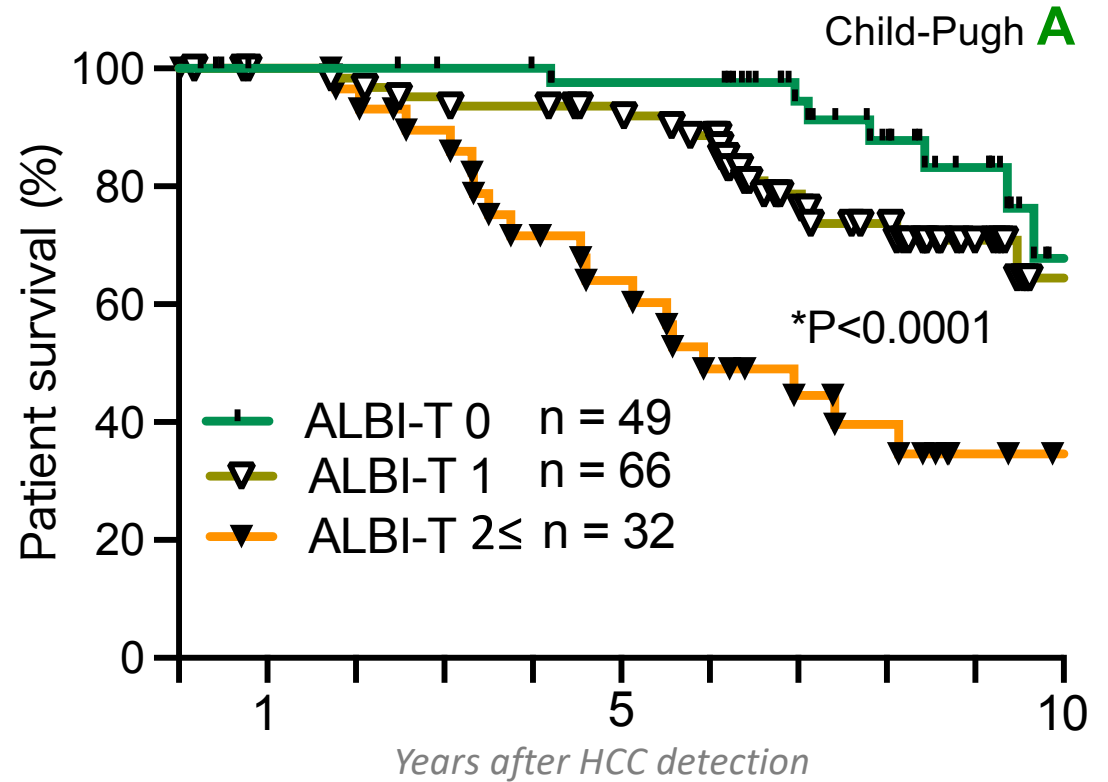
\*No inclusion of patients who underwent LT

# Prognostic factors of patients in Child-Pugh A who met Japan criteria

Variable	Univariate		Multivariate	
	HR	P	HR	P
Age	0.320	0.4787		
Sex	0.298	0.5033		
Primary disease	0.247	0.5665		
Child-Pugh score	<b>2.970</b>	<b>*0.0011</b>	<b>1.347</b>	<b>*0.04500</b>
MELD score	0.528	0.2965		
NLR	0.189	0.6468		
FIB-4 index	<b>1.656</b>	<b>*0.0221</b>	0.463	0.34421
ALBI score	<b>2.827</b>	<b>*0.0015</b>		
ALBI grade	<b>2.860</b>	<b>*0.0014</b>		
mALBI grade	<b>2.451</b>	<b>*0.0035</b>		
AFP	0.301	0.5006		
DCP	<b>1.821</b>	<b>*0.0151</b>	<b>1.885</b>	<b>*0.01304</b>
HCC size	<b>1.688</b>	<b>*0.0205</b>		
Number of HCC	<b>3.010</b>	<b>*0.0010</b>		
HCC size + number	<b>2.946</b>	<b>*0.0011</b>		
*TNM-grade	<b>3.929</b>	<b>*0.0001</b>	<b>3.050</b>	<b>*0.00089</b>

\*TNM of the Liver Cancer Study Group of Japan, 6<sup>th</sup> ed.

ALBI-T score well-stratified patients Within Japan criteria



ALBI-T score	0	1	2	3
ALBI grade	1	2	3	
TNM stage	I	II	III	IV

# Conclusion

## Indication of LT for HCC within Japan criteria

**Absolute** Child-Pugh **B** and **C**

**Possible** Child-Pugh **A**

PTs with **ALBI-T score  $2 \leq$**