

Expression and Effect of Pbrm1 in Renal Ischemia Reperfusion Injury

Yang Gao ¹, Tian Wei ¹, Xingzhe Zhang ¹, Meng Dou ¹, Bingxuan Zheng ¹, Zejiixin Niu ¹, Ge Deng ¹, Puxun Tian ^{1*}

¹ Department of Kidney Transplantation, Hospital of Nephropathy, The First Affiliated Hospital of Xi'an Jiaotong University, Xi'an 710061, China

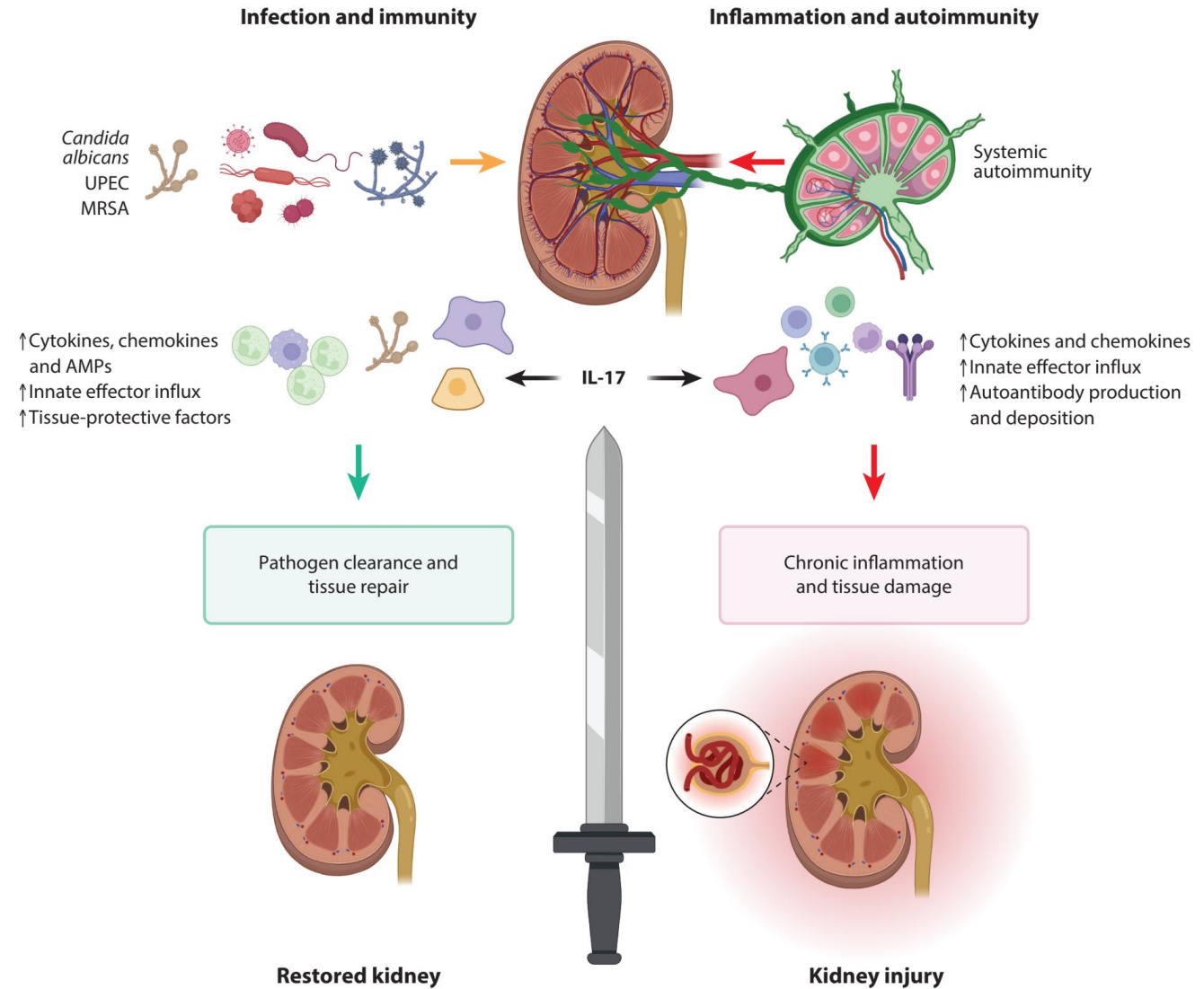
I have no financial relationship with commercial interest to disclose

AND

My presentation does not include discussion of off-label or investigational use.

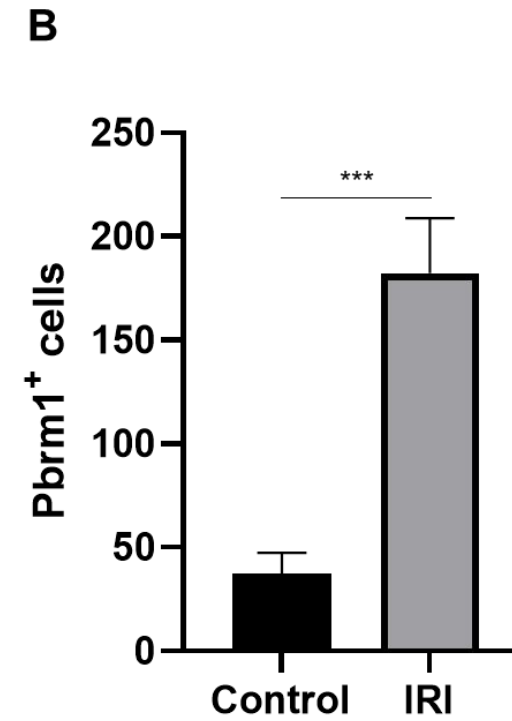
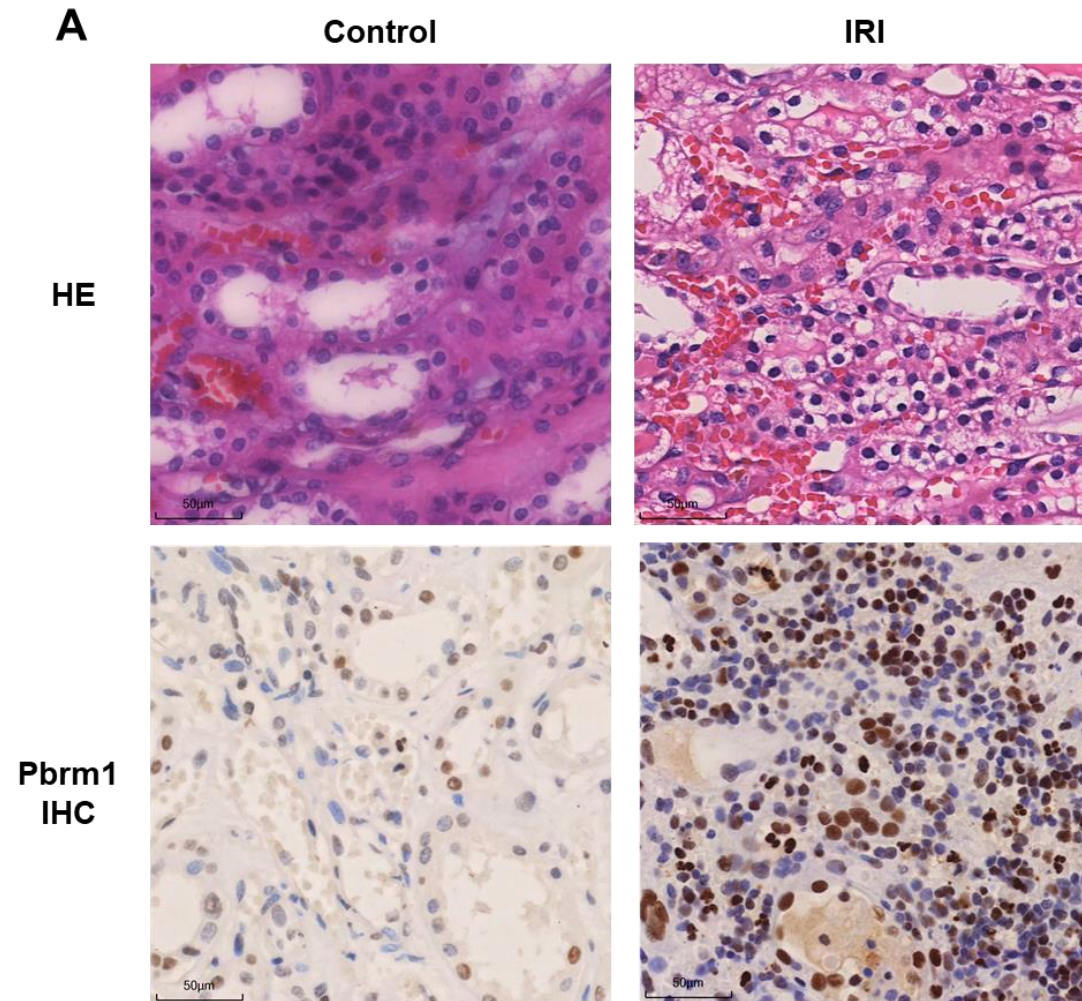
Introduction

- IL-17 activities in the kidney: a double-edged sword;
- Pbrm1 plays an important role in kidney disease.



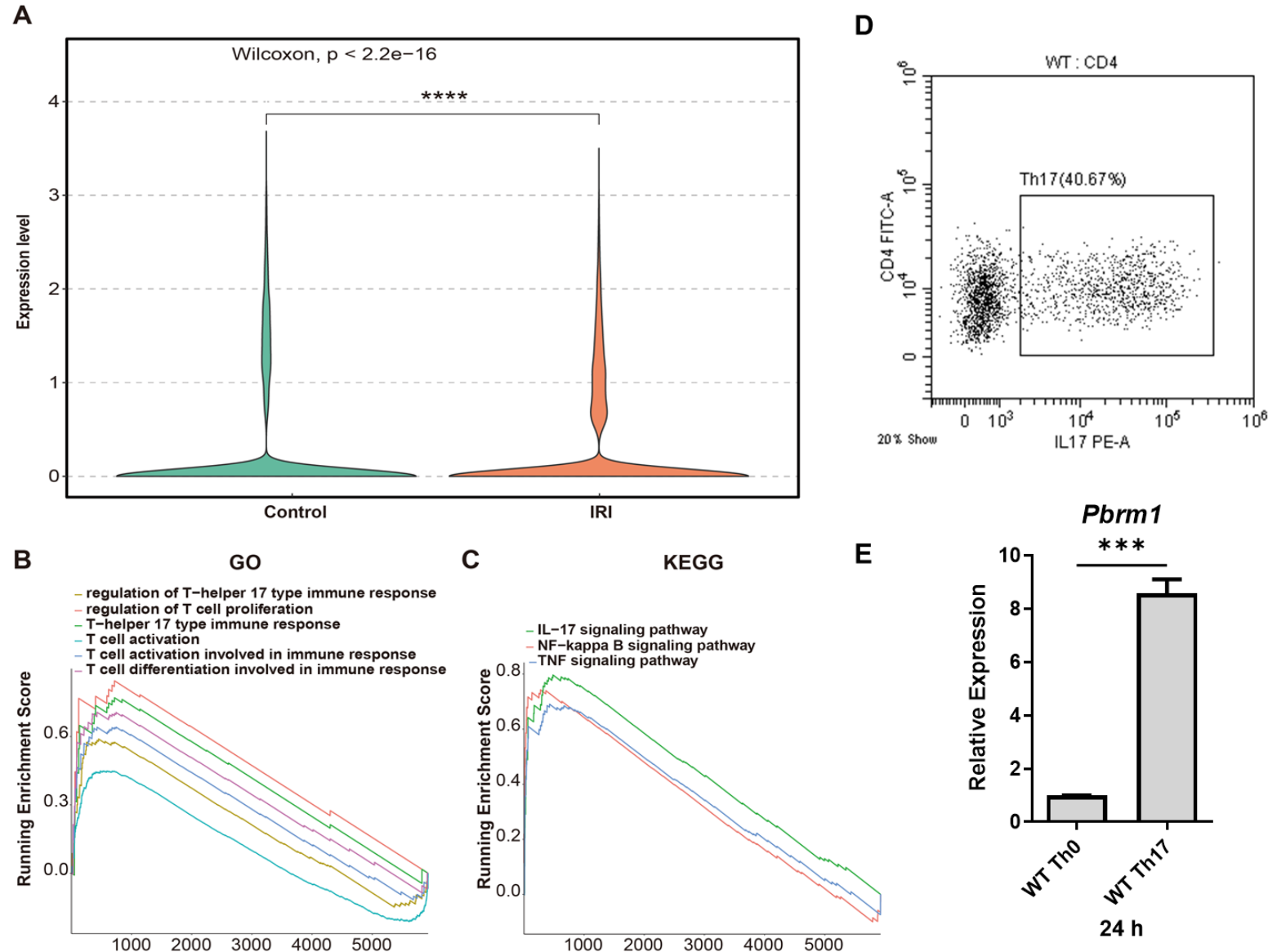
Results

Expression of Pbrm1 in mouse IRI models



Results

Pbrm1 expression analysis in GSE180420 dataset and transcription level in mouse Th17 cells



Conclusion

- The expression of Pbrm1 was significantly increased after renal IRI transplantation;
- Pbrm1 may aggravate renal IRI by affecting the function of Th17 cells.

